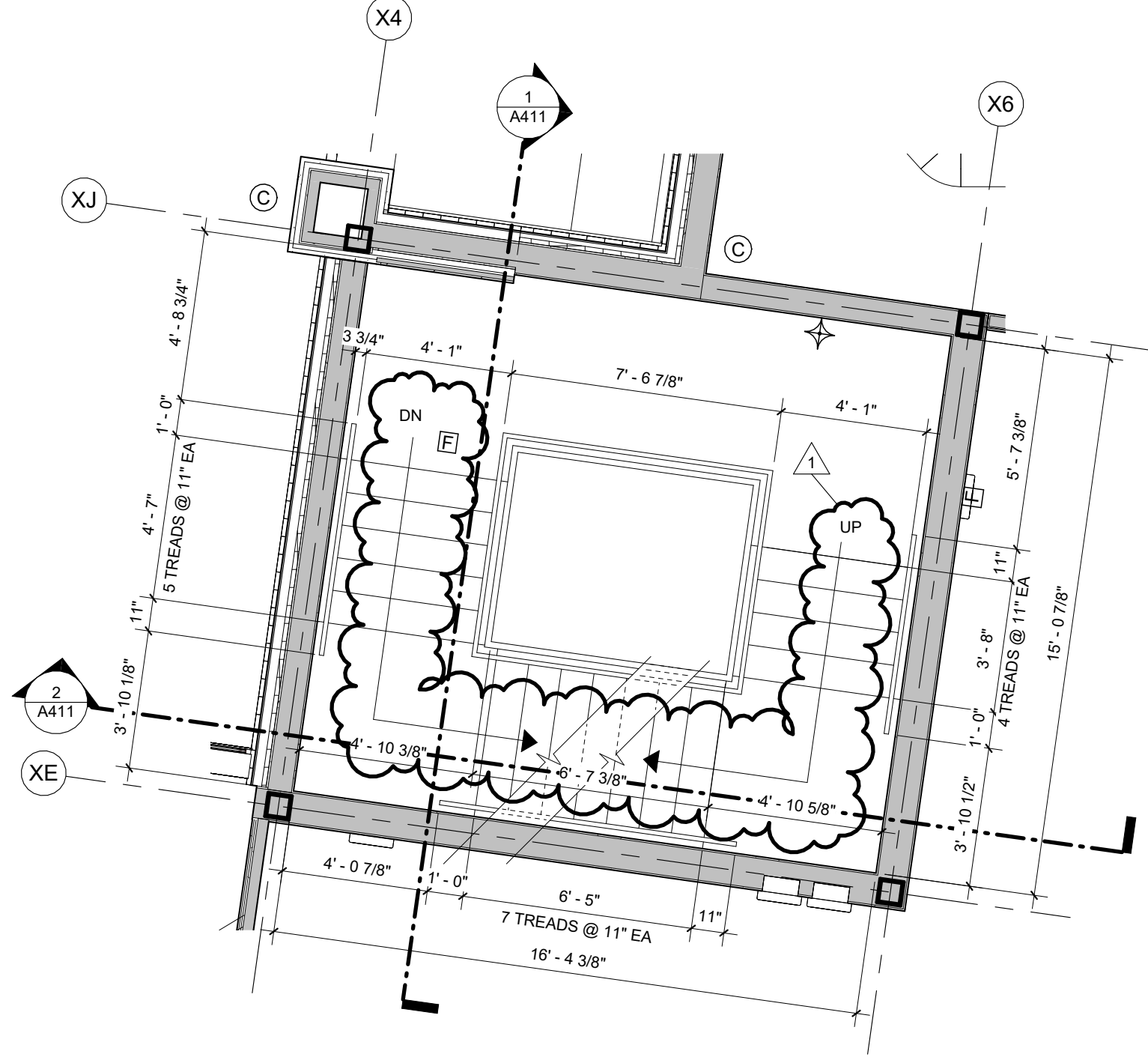
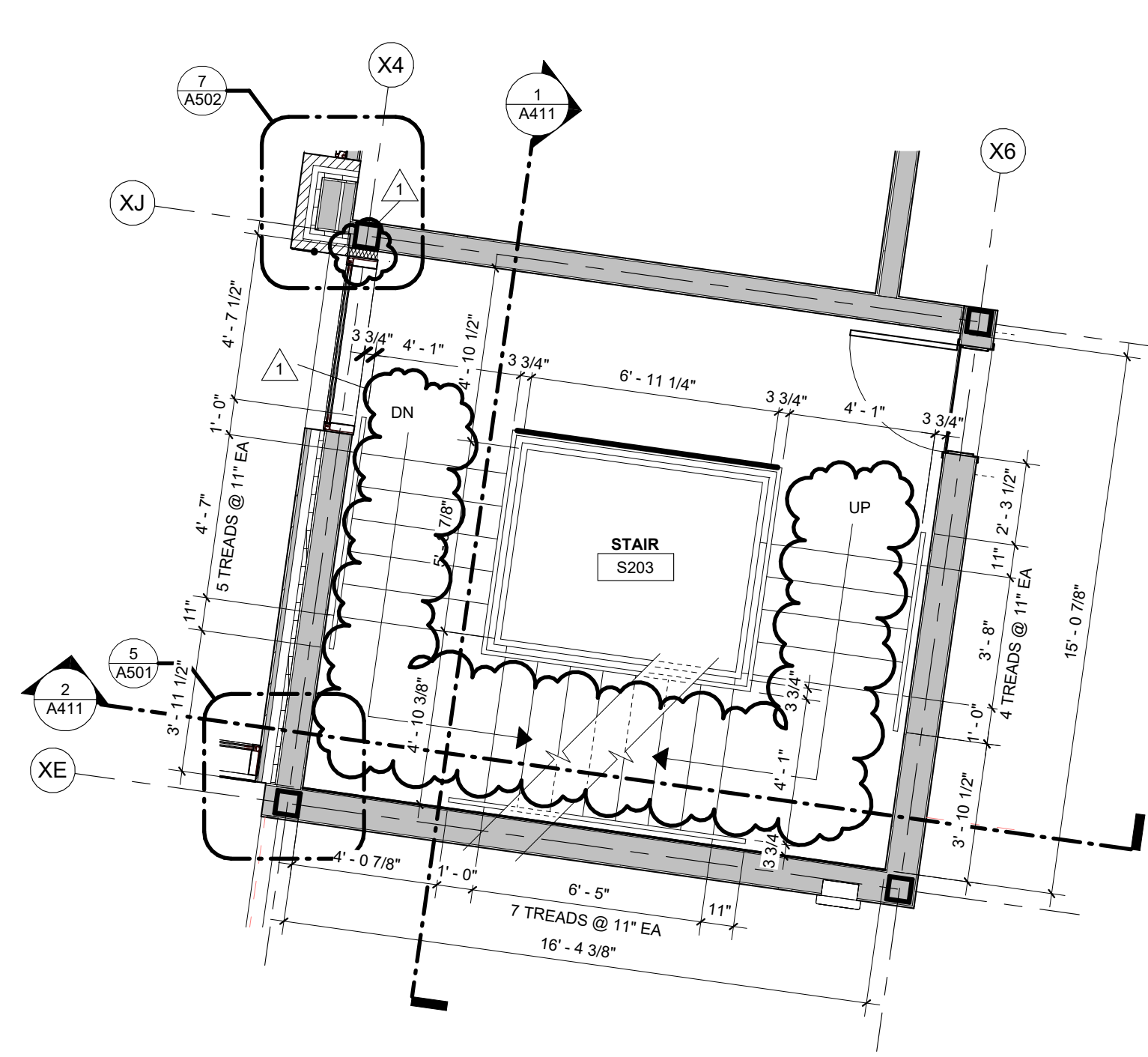


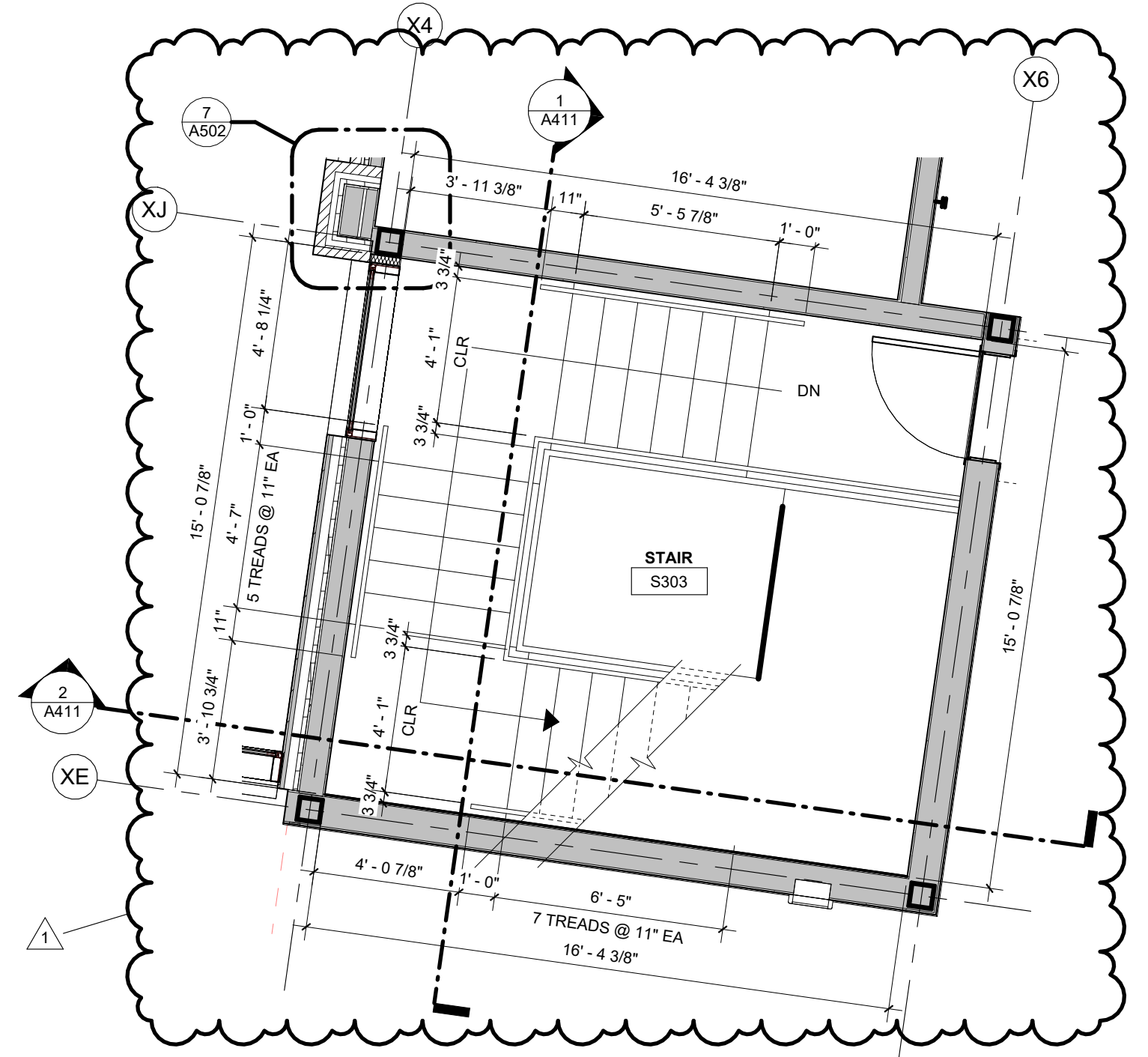
7 ENLARGED STAIR PLAN - S103  
1/4" = 1'-0" | RE:1/A101



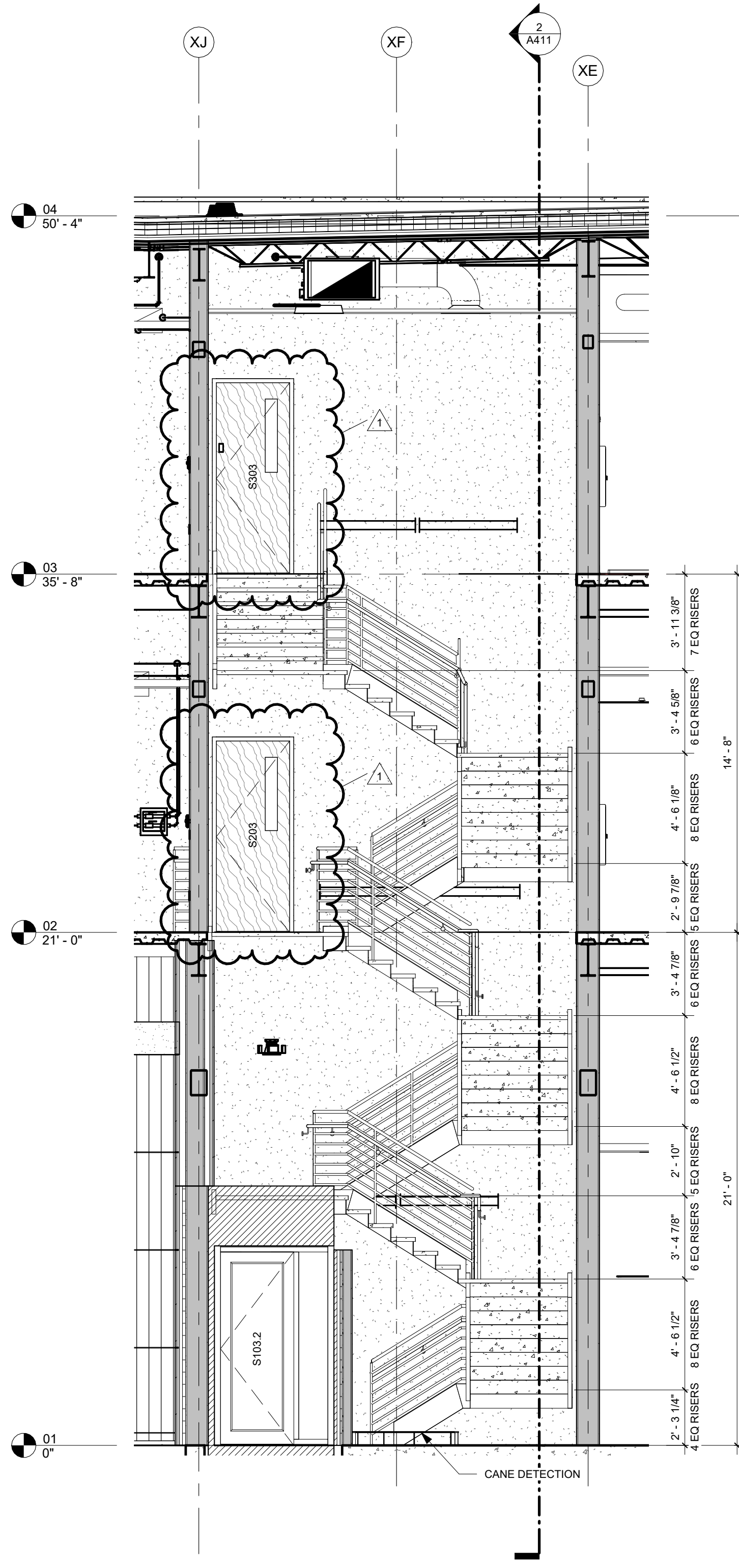
8 ENLARGED STAIR PLAN - S103 INT. LANDING  
1/4" = 1'-0" | RE:1/A101



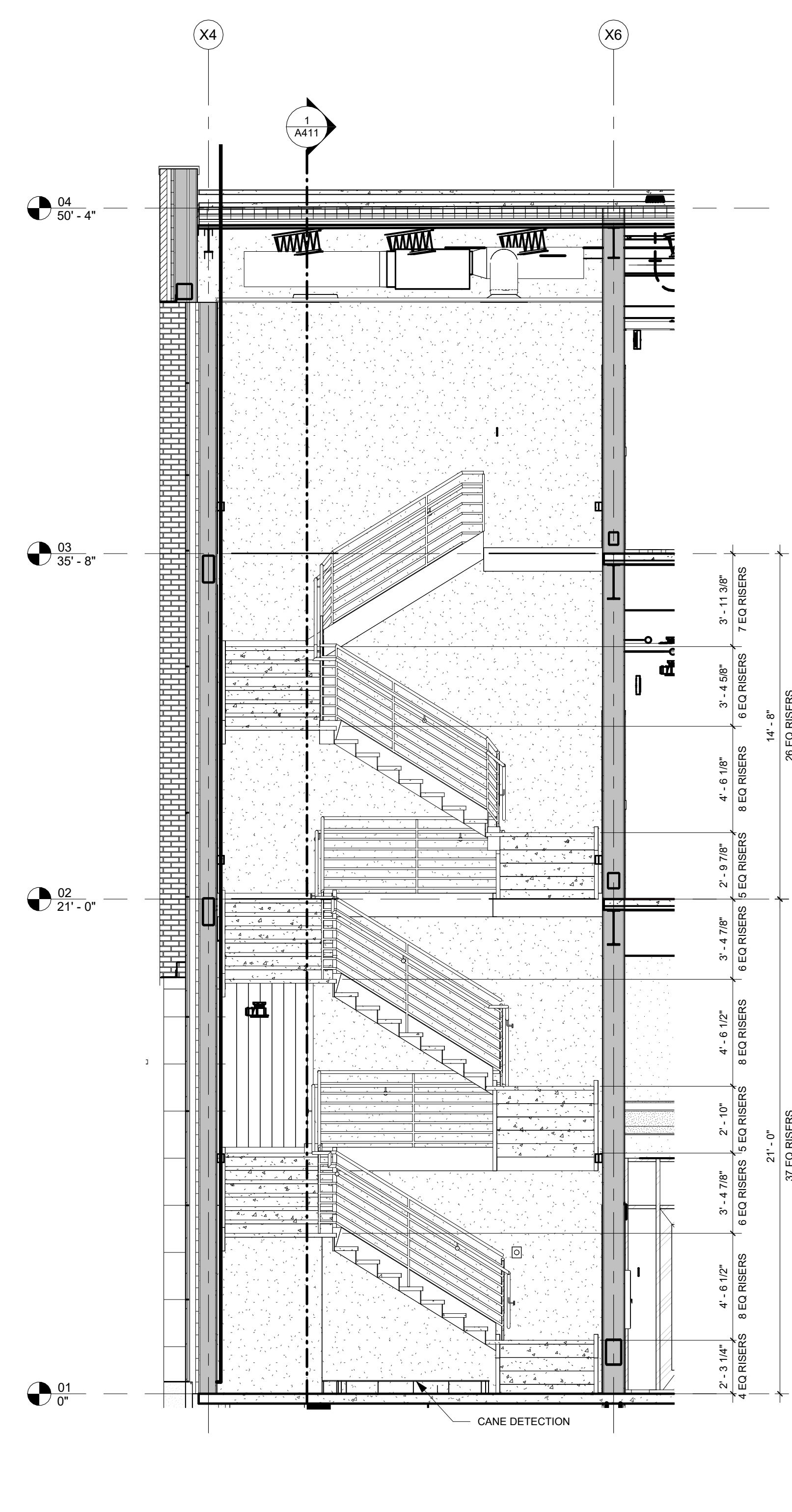
9 ENLARGED STAIR PLAN - S203  
1/4" = 1'-0" | RE:1/A102



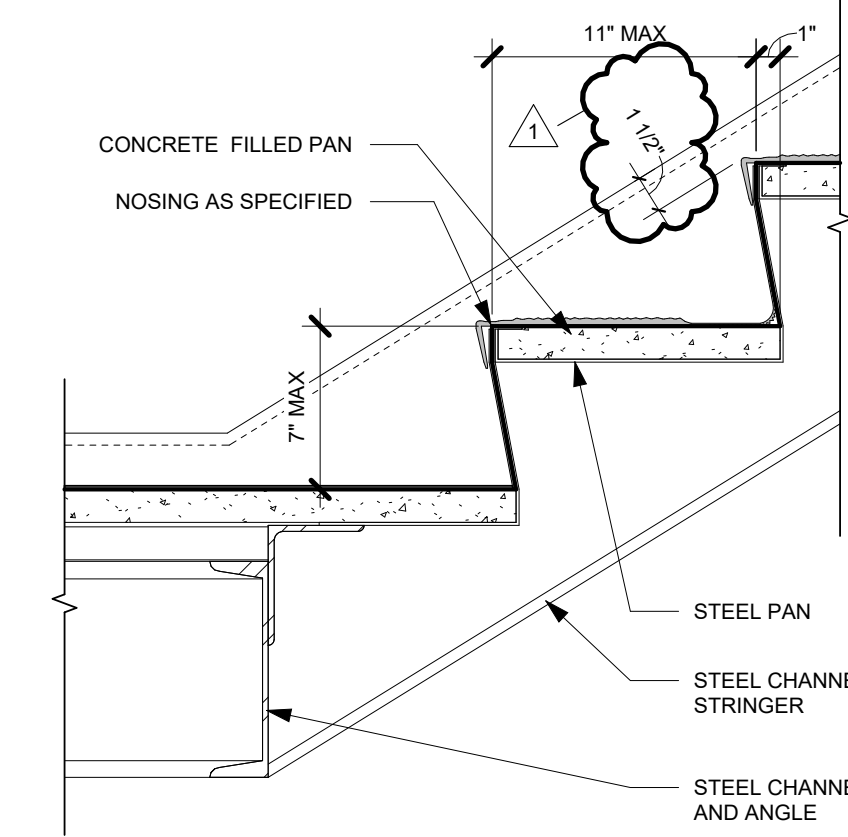
10 ENLARGED STAIR PLAN - S303  
1/4" = 1'-0" | RE:1/A103



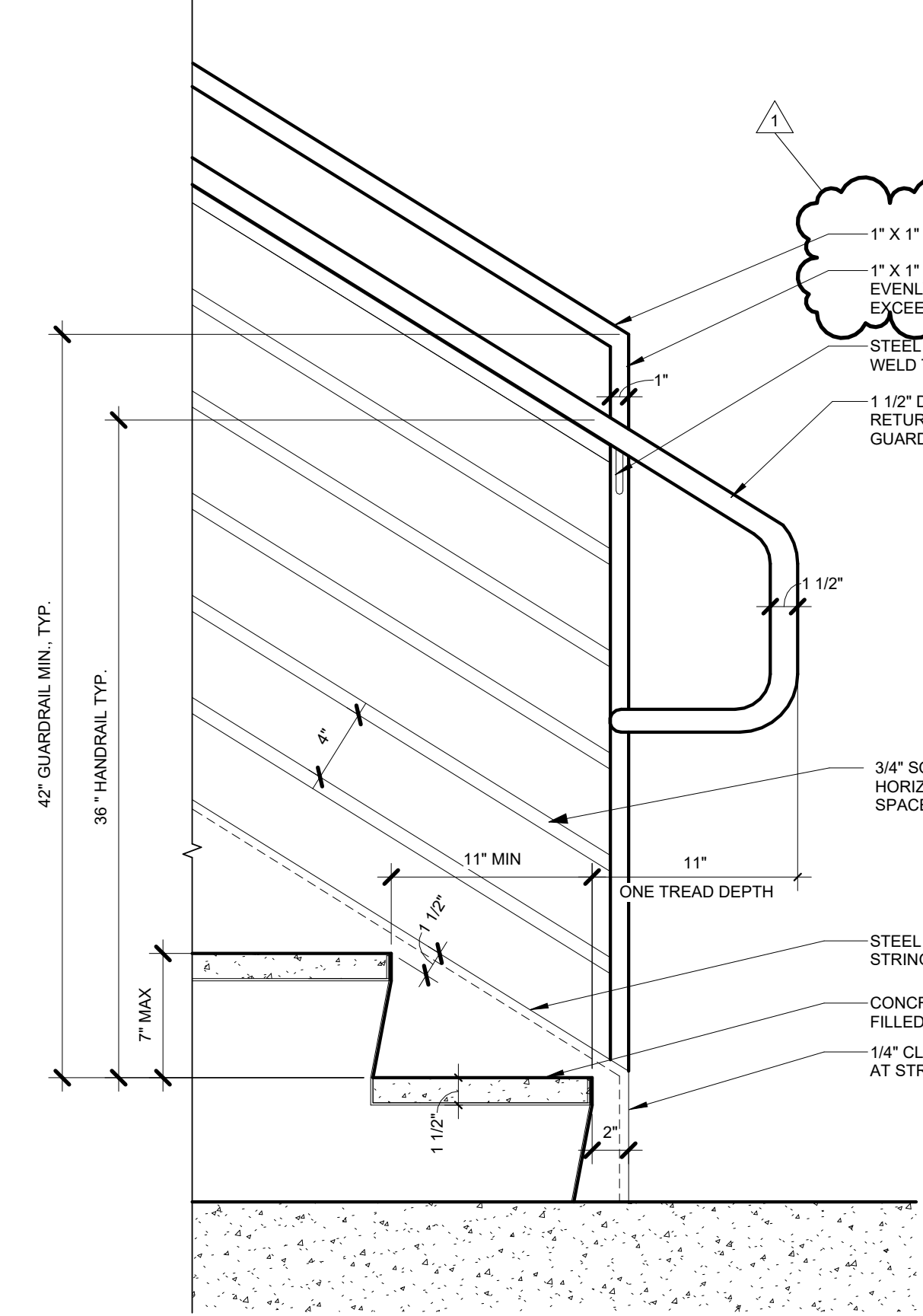
1 STAIR S103 SECTION 1  
1/4" = 1'-0" | RE:2/A411



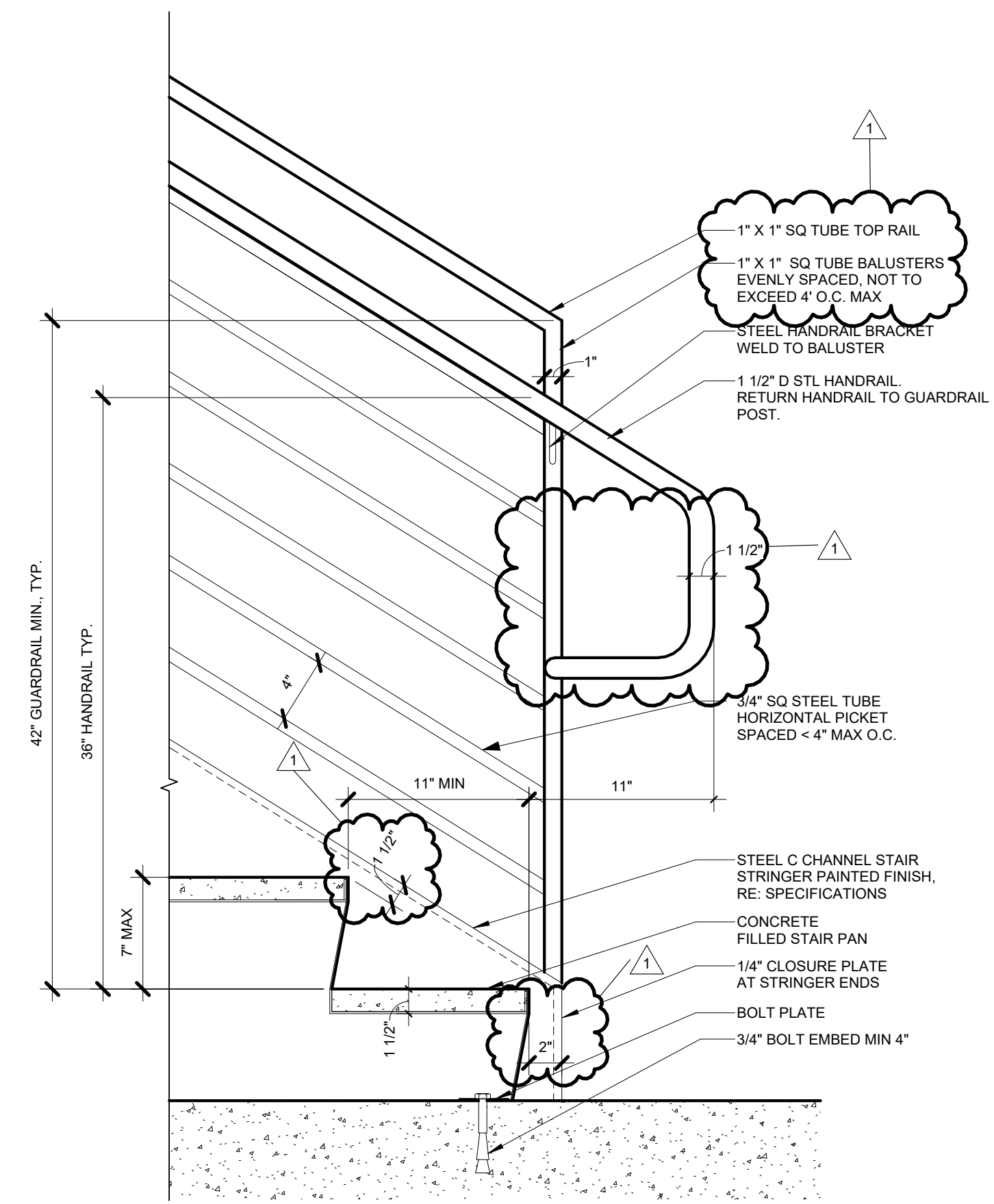
2 STAIR S103 SECTION 2  
1/4" = 1'-0" | RE:1/A411



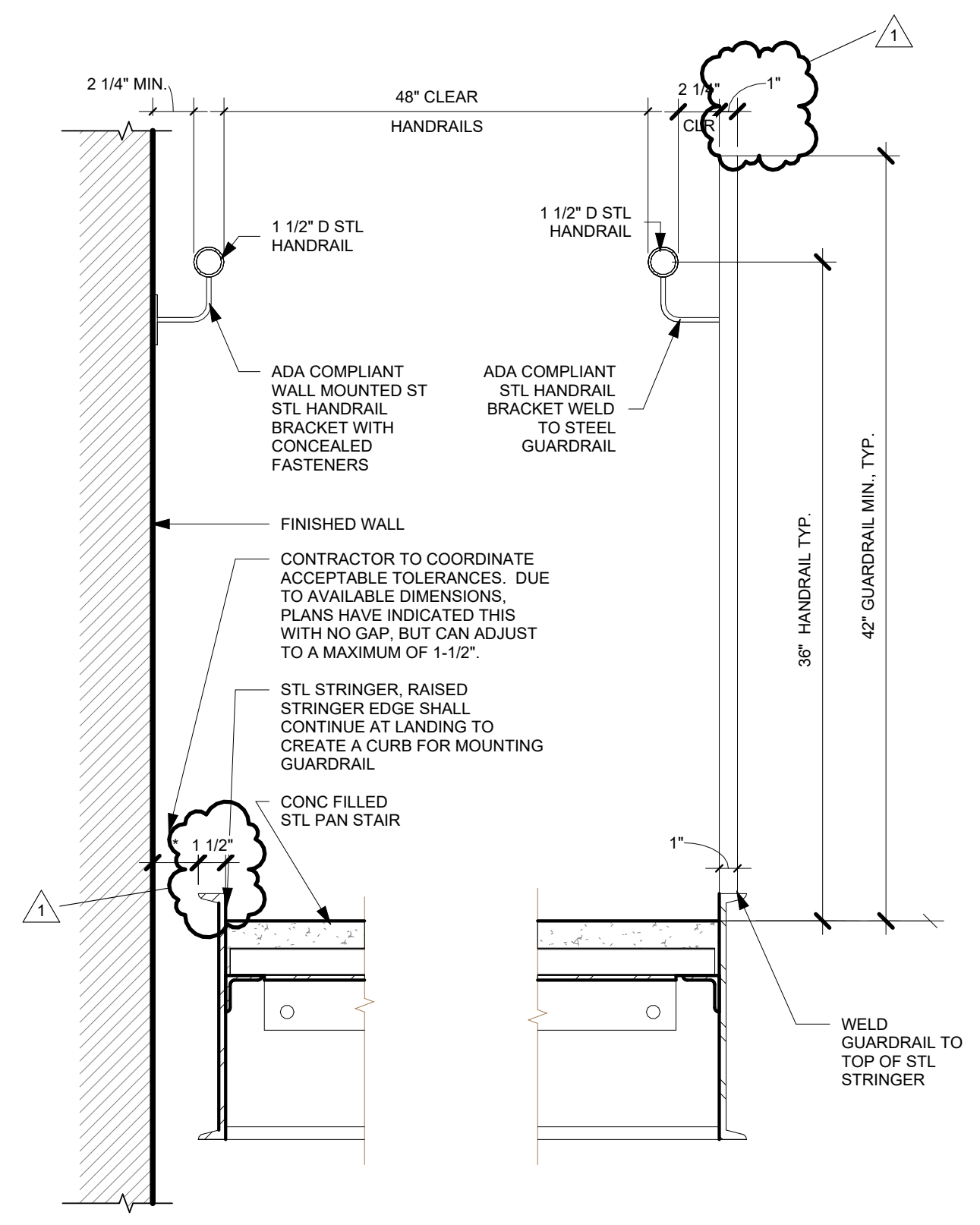
5 DETAIL METAL PAN STAIR LANDING TYP  
1 1/2" = 1'-0"



3 GUARDRAIL AT STAIR BASE  
1 1/2" = 1'-0"



6 DETAIL GUARDRAIL HANDRAIL AT STAIR BASE TYP  
1 1/2" = 1'-0"



4 DETAIL GUARDRAIL HANDRAIL TYP  
1 1/2" = 1'-0"